



# PAEDIATRIC AUDIOMETRY INFORMATION BOOKLET

Our audiologists use a few different assessments to evaluate your child's hearing. This depends on their age and developmental level. This booklet breaks down the different kinds of assessments.

# VISUAL REINFORCEMENT AUDIOMETRY

## FROM 6-8 MONTHS UP TO 2½ YEARS

We use Visual Reinforcement Audiometry (VRA) to assess the hearing of children usually from 8 months up to 2½ years of age depending on the child's abilities and interest. VRA is suitable for babies when they are able to sit (with support) with good head control and the ability to turn their head. Two fully trained and highly specialised Paediatric Audiologists are required for this type of assessment.

This assessment can be performed with your child sitting in a chair or on your knee. We start the assessment by playing a loud enough sound for your child to hear using loudspeakers. We aim to observe your child localising by turning their head towards the sound source. Do not worry if your child does not do this first time round. It often takes a few attempts to elicit this response. We are also highly experienced and are able to adapt the assessment process according to the individual needs of your child. This "head turn" response is then visually reinforced using an image or animation on a screen. We use a variety of short clips of different animations children love, such as Peppa Pig, Baby Shark, Paw Patrol and so on.

Please send us an email if possible a day or two in advance with your child's favourite cartoons or characters in order for us to adapt and personalise the visual material to the needs of the child. This is not essential! We have a number of stock clips at our disposal as well.

Here is a link to a video example of VRA and what to expect at your child's appointment:  
<https://www.youtube.com/watch?v=BB8dnQbFnTo>



# CONDITIONED PLAY AUDIOMETRY

## FROM 2½ YEARS TO 5 YEARS

We use Conditioned Play Audiometry (CPA) when evaluating the hearing of children between the ages of 2½ and 5 years of age depending on their developmental level and interest. Ideally we would like your child to wear headphones and to perform a simple task (for example, putting a Lego block in a box or ball in a bucket) whenever a beep sound is heard.

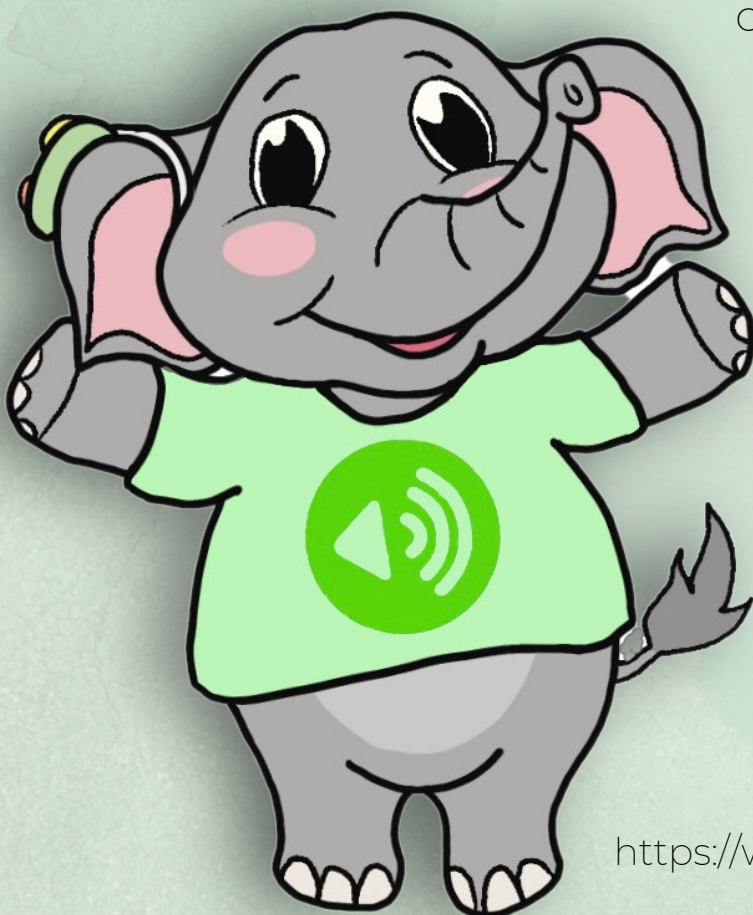
At the start of the evaluation we will demonstrate to your child what is to be expected. Together we will practice without the headphones on by listening to loud beeping sounds through the speakers. Once your child is confident, we will then put the headphones on for ear-specific testing. It's ok if your child does not feel comfortable wearing the headphones as we can perform the assessment using loud speakers or insert earphones. We have a variety of toys to make the "listening game" fun and exciting.

To help prepare your child for their visit to our clinic, we advise the practicing of the Ready-Steady-Go game at home.

It is important that your child understands that they need to wait for the prompt "Go!" before performing the task. Remember to keep the task simple and fun!

Please see the link below from the Evelina Hospital in London as an example of what to expect at your child's appointment:

<https://www.youtube.com/watch?v=RfufTsUrGHo>



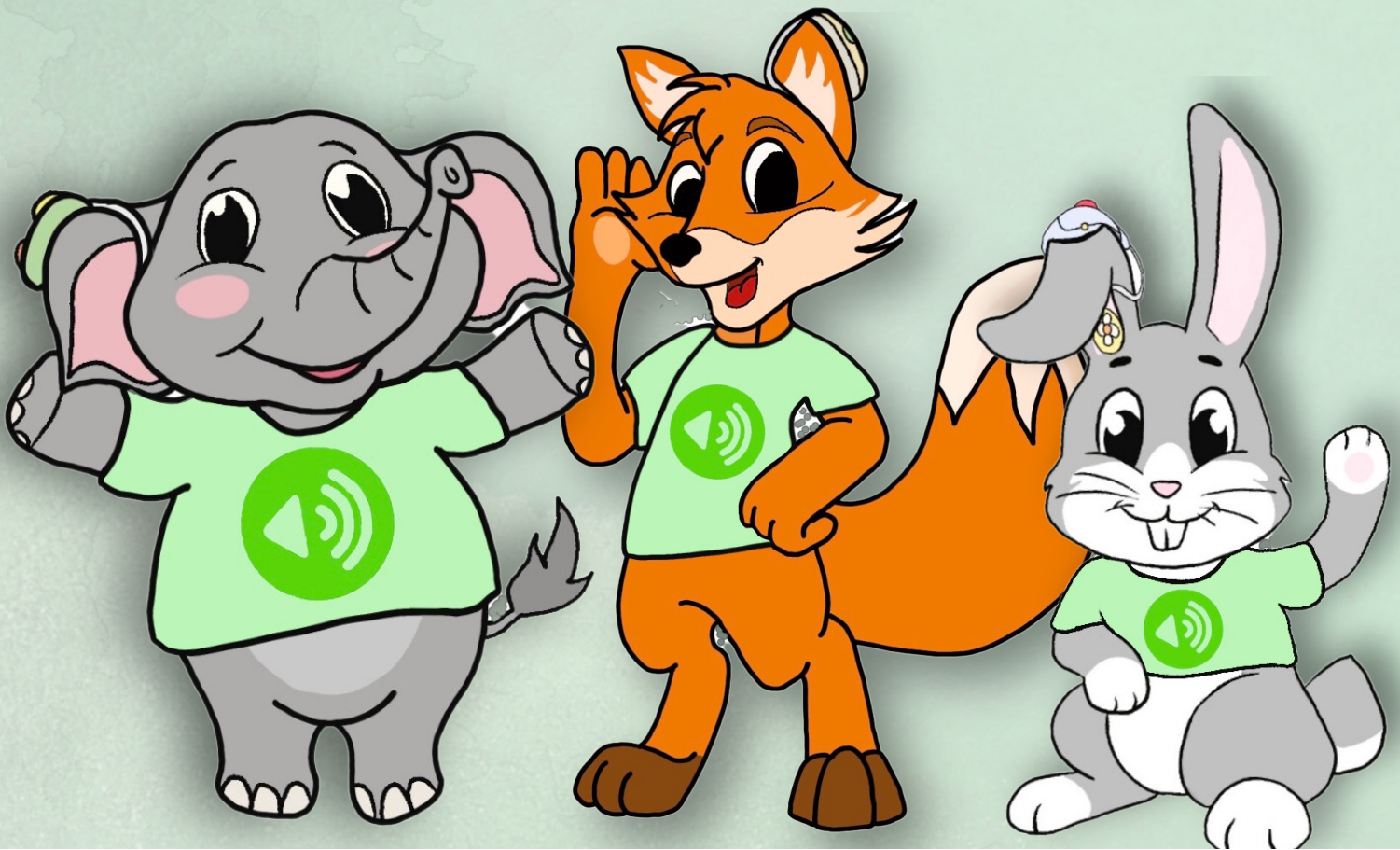
# PURE TONE AUDIOMETRY FROM 5 YEARS UPWARDS

We use Pure Tone Audiometry (PTA) to assess hearing in children and teenagers from the age of 5 years old upwards depending on their developmental level and ability. Headphones are required to be worn for this assessment to provide ear-specific information, and we ask your child to press a button when they hear a beep sound. We will also endeavor to perform a speech assessment if clinically relevant where we ask your child to repeat a list of words presented through the headphones. These are the same tests usually performed on adults and will provide our audiologists with an in-depth look into your child's hearing and any hearing loss they may have.



# COMPLEMENTARY AND ALTERNATIVE ASSESSMENTS

We also hope to look in your child's ears using an otoscope and we will also perform a pressure test called tympanometry by inserting a small probe in your child's ear to check the middle ear status. These checks are quick and pain free and could be done with your child sitting in a chair or on your knee. We have another check called Oto-acoustic Emission(OAE) testing which records an echo response in the ear canal using a probe.. OAE testing enables us to obtain ear-specific information on the condition of the hair cells within the hearing organ (cochlea). This assessment is similar to the screening test that was done at birth. Please don't feel the need to wake your child if they happen to fall asleep upon arriving at our clinic as we are able to perform the OAE test while they are asleep.





THE  
**HEARING  
CLINIC** UK  
THE HEARING EXPERTS

We aim to complete the full battery of tests within 45 to 60 minutes depending on the responses we observe and the test conditions. We kindly request that distractions are minimised in the room to ensure the best possible test conditions for your child. Siblings and other family members are welcome to wait in the waiting area.

We look forward to meeting you and your child!

Please don't hesitate to contact us if you have any questions.

